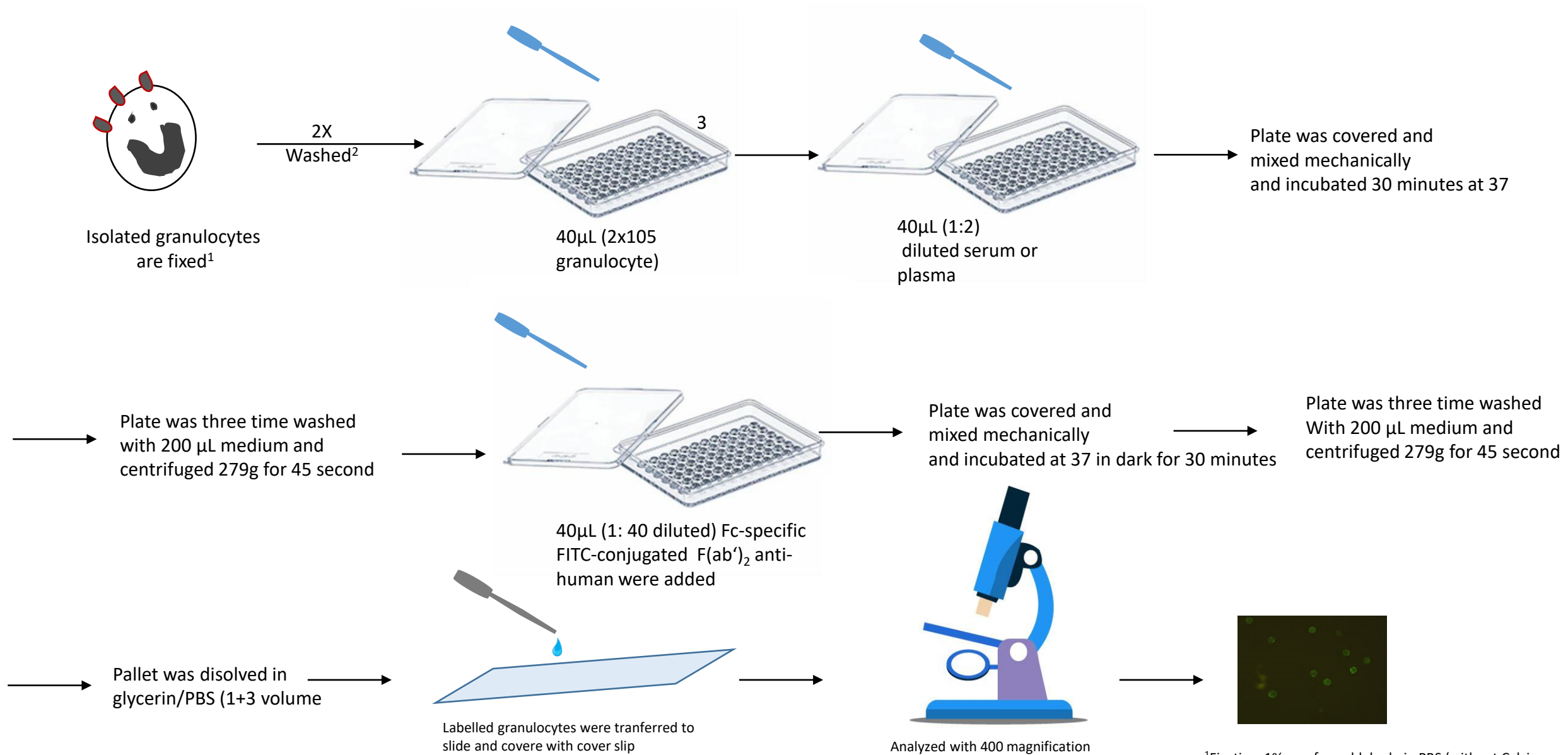


Granulocyte Immunofluorescence Test (GIFT)



¹Fixative: 1% paraformaldehyde in PBS (without Calcium and magnesium)

²Wash buffer: PBS with 0.9% Sodium chloride, pH 7.4

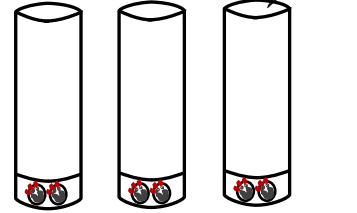
³Greiner Bio One

Granulocyte Immunofluorescence Test (GIFT)

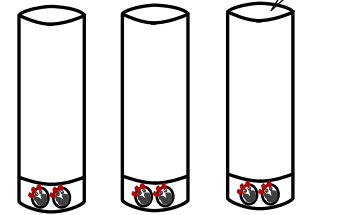


Isolated granulocytes are fixed¹.

2X Washed²



40µL of granulocyte suspension³ (2×10^5 granulocytes) are added to FACS tubes.

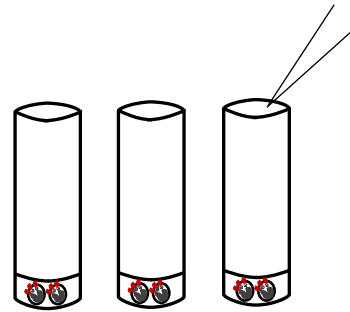


40µL of diluted serum or plasma are added to each tube.

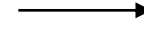
Tubes are incubated at 37° for 30min.



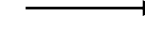
Tubes are washed three times with 0.2%BSA/PBS solution; centrifuge at 2.000rpm for 5min; discard supernatant



40µL (1: 40 diluted) of FITC-conjugated F(ab')₂ anti-human IgG are added to each tube.



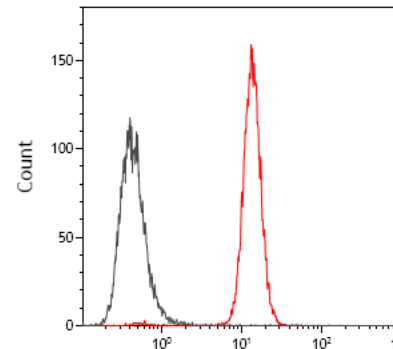
Tubes are incubated at 37° in dark for 30 minutes



Tubes are washed three times with 0.2%BSA/PBS solution; centrifuge at 2.000rpm for 5min; discard supernatant



500uL of PBS are added to each tube, and measure the fluorescence intensity by the flow-cytometer



¹ Fixative: 1% paraformaldehyde in PBS (without Calcium and magnesium)

² Wash buffer: PBS (pH 7.4)

³ 0.2%BSA/PBS